


Torque wrenches

Warning

1. When set torque has been reached, a  "click" will confirm. Continuously applying force may damage bolt or nut, especially at low torque setting.
2. Do not turn the handle when locked.
3. Do not apply more than one turn below lowest or highest setting.
4. Do not disassemble and adjust the calibrator without special equipment.
5. Avoid any liquid contact with torque wrench, to make sure internal lubricant stays unaffected.
6. Set torque at lowest setting after usage, to assure a longer lifetime.
7. Torque wrenches are precision tools and are not designed for loosening bolts and nuts.

Maintenance

When torque wrench is being used for the first time, or after an unused period, make sure to set a higher torque to ensure the internal recoating with lubricant.

Please use the torque wrench carefully and make sure to study and follow the instruction before operating

The accuracy of the torque wrench should be regularly inspected and checked at least once a year or per 5.000 times used.



- After use reset to zero torque.
- Do not exceed torque.
- High leverage can cause damage to torque wrench.
- Periodic recalibrations are necessary to maintain accuracy.
- Do not use with impact wrench.
- Do not use torque wrench to loosen fasteners.
- Never use torque wrench as a lever bar.
- Use of damaged hand tools, sockets extensions and accessories may result in injury.
- Do not replace worn parts individually, use entire content of repair kit.
- Frequently inspect, clean and lubricate ratchet mechanism with light oil.



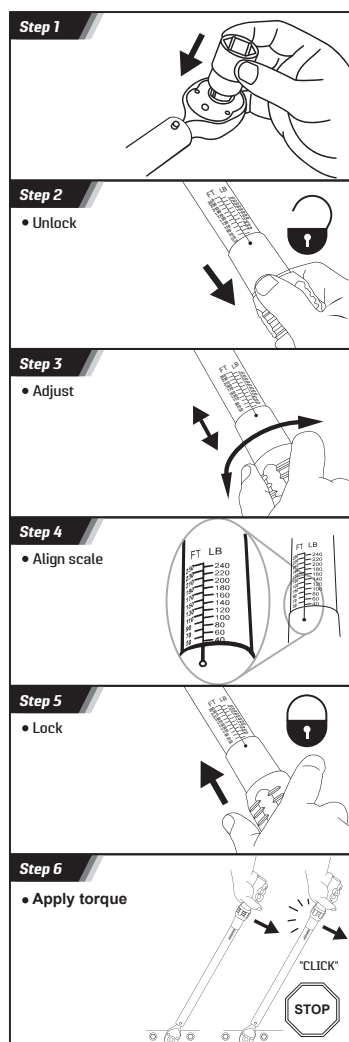
Warning

- Rubber handle is not insulated.
- Do not use on live electrical or high voltage circuits.

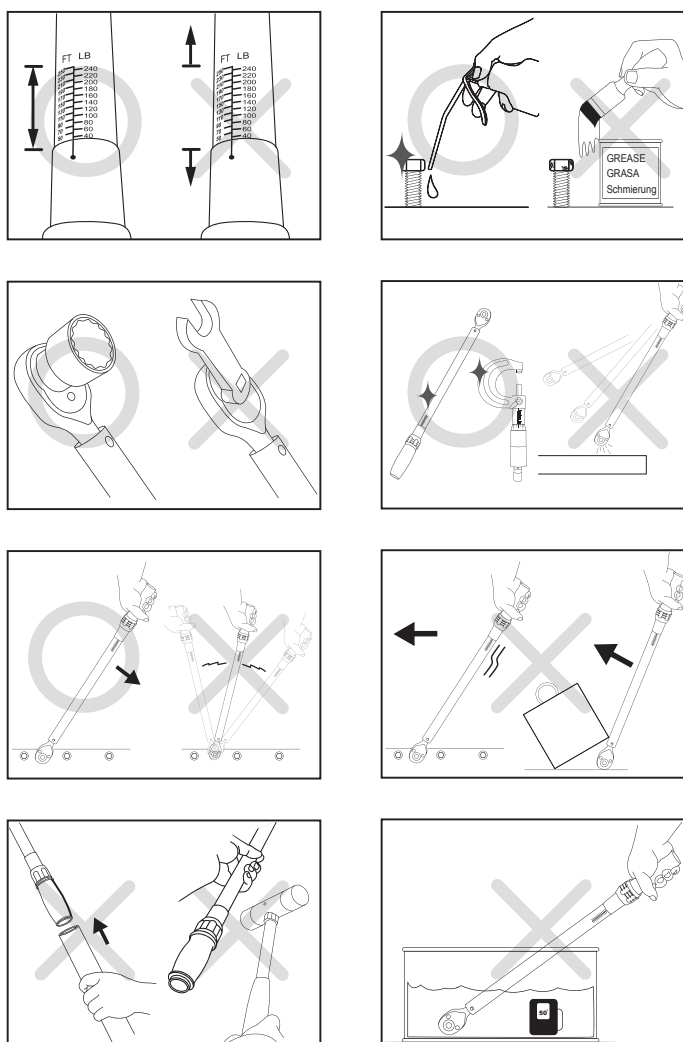


Torque wrenches

How to use sonic torque wrench



Caution



We calibrate each torque wrench at the factory using torque standards traceable to the National Institute of Standards and Technology (NIST), and certifies it meets the accuracy requirements of specifications ASME B107.14M1994 and ISO 6789.

CONVERSION TABLES

CONVERT FROM	TO	MULTIPLY BY
OZ-IN	IN-LB	0.0625
IN-LB	IN-OZ	16
IN-LB	KG-CM	11.521
IN-LB	FT-LB	0.0833333
IN-LB	KG-M	0.01152
IN-LB	N-M	0.1130
IN-LB	DN-M	1.1298

CONVERSION TABLES

CONVERT FROM	TO	MULTIPLY BY
FT-LB	NM	1.3558
FT-LB	KG-M	0.1383
FT-LB	IN-LB	12
N-M	DN-M	10
N-M	KG-CM	10.1972
N-M	KG-M	0.10197
N-M	IN-LB	8.8507

CONVERSION TABLES

CONVERT FROM	TO	MULTIPLY BY
N-M	FT-LB	0.73756
DN-M	IN-LB	0.885
DN-M	N-M	0.100
KG-CM	IN-LB	0.8661
KG-CM	N-M	0.09807
KG-M	FT-LB	7.233
KG-M	N-M	9.8066