

ART.NO 818029

Instructions

Radiator pressure tester Vacuum-type cooling system kit



General safety warnings

- Be careful when opening the cooling system. The cooling system may be pressurized and hot coolant may spray out.
- Release the pressure before disassembling the pump or adapter.
- After the pressure test or repair, check the coolant for correct level and frost protection.
- Be careful when working on running engines. Loose or baggy clothing can be caught in rotating engine parts.

Instruction

Cooling System Leakage Test

1. Remove the original radiator cap from the radiator or expansion tank.
2. Select the correct adapter from the test kit and connect it to the radiator or expansion tank.
3. Now connect the hand pump (#4) to the adapter.
4. Press the test pump until a pressure of 10 to 15 psi is reached. [see fig. 1, 2]

Caution: Avoid a pressure of 35 psi or more !

Check the pressure gauge. If the displayed value decreases, the leak is in the cooling system. The cooling system has a leak if there is a loss of pressure or water.



fig.1

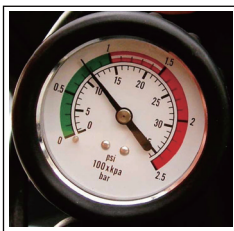


fig.2

Radiator Cap Leakage Test

1. Remove the original radiator cap.
2. Select the appropriate joint #23 or #24 and connect it to the radiator cap (#27 or #28 or #29).
3. Press the test pump a few times and watch the pressure gauge.

The pressure drops if the cap is faulty. [see fig.3]

4. Compare the measured pressures with the standard radiator cap pressure.

Note:

If the cap exceeds the Max. pressure standard (for example 0.9 kg/cm², see fig. 4), DO NOT press the pump higher than 9 psi during leakage testing.



fig.3



fig.4

Maintenance / Storage

- Attach the test adapter to the hand pressure pump's quick coupling, then press the hand pressure pump a few times to force the remaining water out of the test adapter.
- Drop pneumatic oil into the air hole of the hand pump end to lubricate the hand pump piston.

Fill cooling system

1. Open the hood and attach a vacuum pump with hooks on the hood.
2. Remove the cap from the radiator or reservoir. Completely drain the coolant in a suitable place.
The method can be found in the vehicle-specific service book.
3. Connect a suitable vehicle specific adapter or a universal adaptor to the radiator/reservoir. (see fig.5, 6)



fig.5



fig.6

4. Make sure the SW1 (air switch) is set to "ON" and SW2 (coolant switch) is set to "OFF". (see fig. 7)
5. Connect the vacuum pump to compressed air and set the "On/Off" switch to "ON". (see fig.8)
Set SW1 (air switch) to "OFF" if a pressure of 20-25 Hg (50-60 cmHg) is reached.(see fig.9)

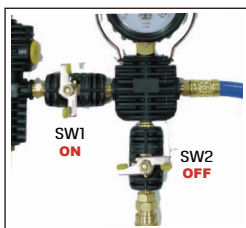


fig.7

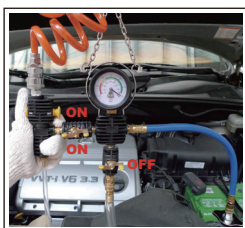


fig.8



fig.9

6. Connect the coolant hose to the vacuum pump and put the hose into a container filled with coolant.
7. Make sure the SW1 (air switch) is set in the "OFF" position before the coolant is be topped up.
8. Make sure the hose is filled with coolant.
9. Set the SW2 (coolant switch) to "ON", the coolant will be sucked from the container. (see fig.10)
10. If the pressure indicator has dropped to "0", the cooler must be sufficiently filled, otherwise procedure must be repeated.

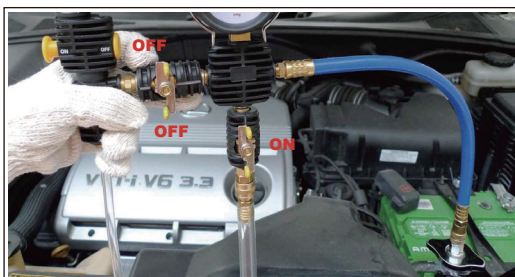
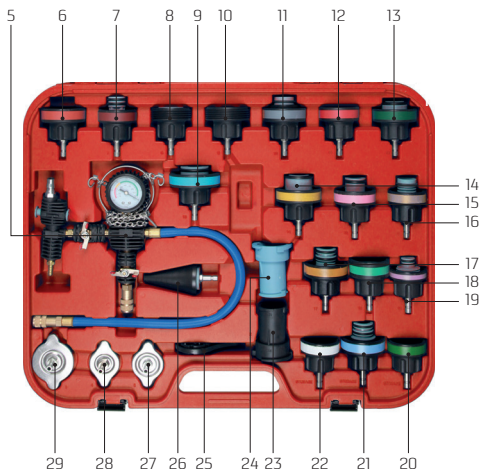
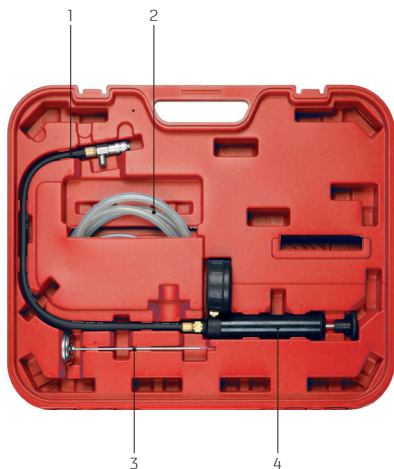


fig.10

Important note

These instructions do not replace the car specific service book. You may find additional information in the service book. Vehicle-specific data must be available for all tests, without which no adequate results can be guaranteed.



| NO | Description |
|----|--|
| 1 | Hand Pump hose |
| 2 | Filling hose (thin hose, coolant hose) |
| 3 | Thermometer |
| 4 | Hand Pump with gauge |
| 5 | Filling unit |
| 6 | Cadillac. Daewoo. Ford. GM. Jaguar. Jeep. Land Rover. Mercedes Benz. Mercury. Pontiac. Porsche. Saab. Saturn |
| 7 | Alfa Romeo. Citroen. Fiat. Mini Cooper. Peugeot. Renault. Saab. Sterling. Jeep. Volvo |
| 8 | VW Vento. T4. Passat 1996. Golf Beattie. Sharan |
| 9 | Mercedes Benz (C. E and S-class) W140. W124. W210. W211. W215. W216. W220. R230 |
| 10 | Audi A4. A5. A6. VW Passat 1997-2002. BMW345. Porsche Cayenne |
| 11 | BMW E32. E34. E36. E38. E39. E46. E90 |
| 12 | Audi 1975-1993 and VW1975-1993 mit Aussengewinde |
| 13 | Ford Mondeo. International. Land Rover. Opel. Ssangyong |
| 14 | Ford Mondeo. Focus. C-Max |
| 15 | Mazda [M3] |

| NO | Description |
|----|--|
| 16 | Mercedes Benz A-Klasse W168. Vito |
| 17 | BMW E60. E63. E64. E65 |
| 18 | VW Sharan I. 8T u. 2.8 |
| 19 | Toyota Celica. RAV4. Previa. MR2 |
| 20 | BMW. Land Rover. Mini |
| 21 | Opel. Fiat. Chevrolet. Buick. Cadillac. Ford (USA). Saab. GMC. Suzuki. Vauxhall. Mazda. Lincoln. Oldsmobile. Isuzu. Hummer |
| 22 | SAAB |
| 23 | Connecting Piece R123/R124 (black) |
| 24 | Connecting Piece R123/R124 (blue) |
| 25 | Tool for test adapter |
| 26 | Universal Adapter |
| 27 | Acura. Chevrolet. Chrysler. Dodge. Eagle. Honda. Lexus. Mercedes Benz M-class. Mitsubishi. Suzuki. Toyota |
| 28 | Acura. Chevrolet. Chrysler. Dodge. Ford. GM. Honda. Hyundai. Infiniti. Isuzu. Kia. Lexus. Mazda. Mercury. Mitsubishi. Mercedes Benz. |
| 29 | Mercedes Benz W123. W126. W124. W201. Buick. Chrysler. Chevrolet. Dodge. Jeep. Oldsmobile. Pontiac |